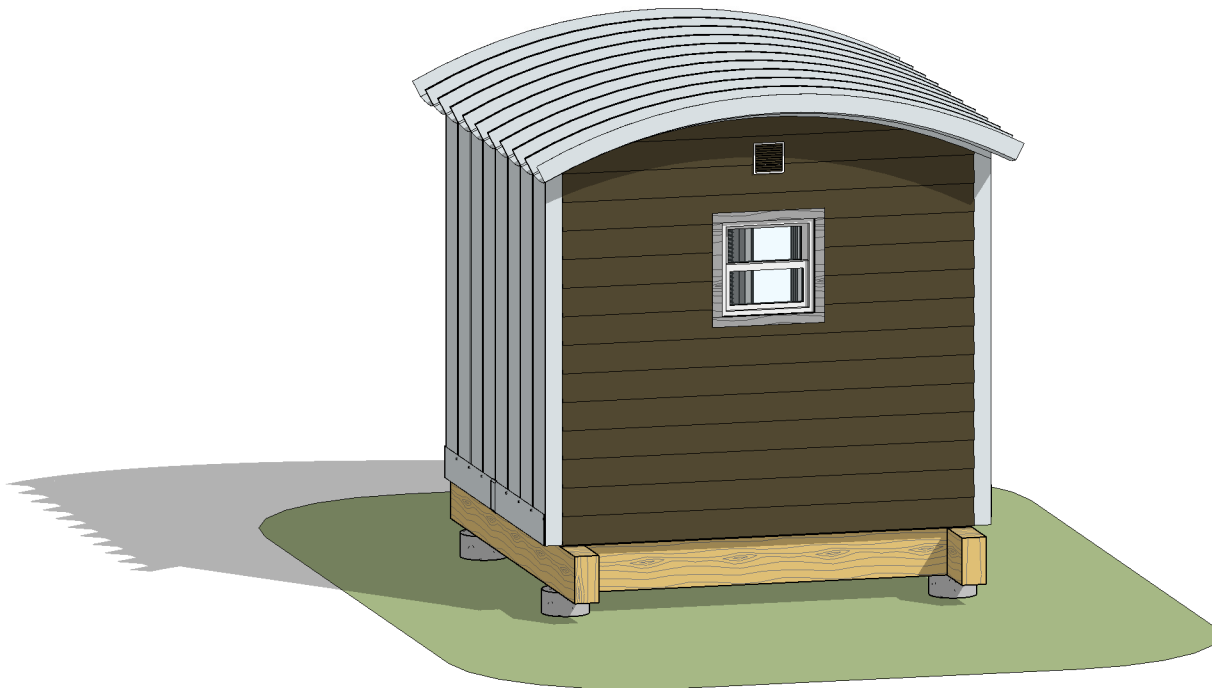


① LT-FRONT VIEW



② LT-REAR VIEW



YOCTO Homes

13020 Katonien Street,
Maple Ridge, B.C, V2W 0J2

3D VIEW

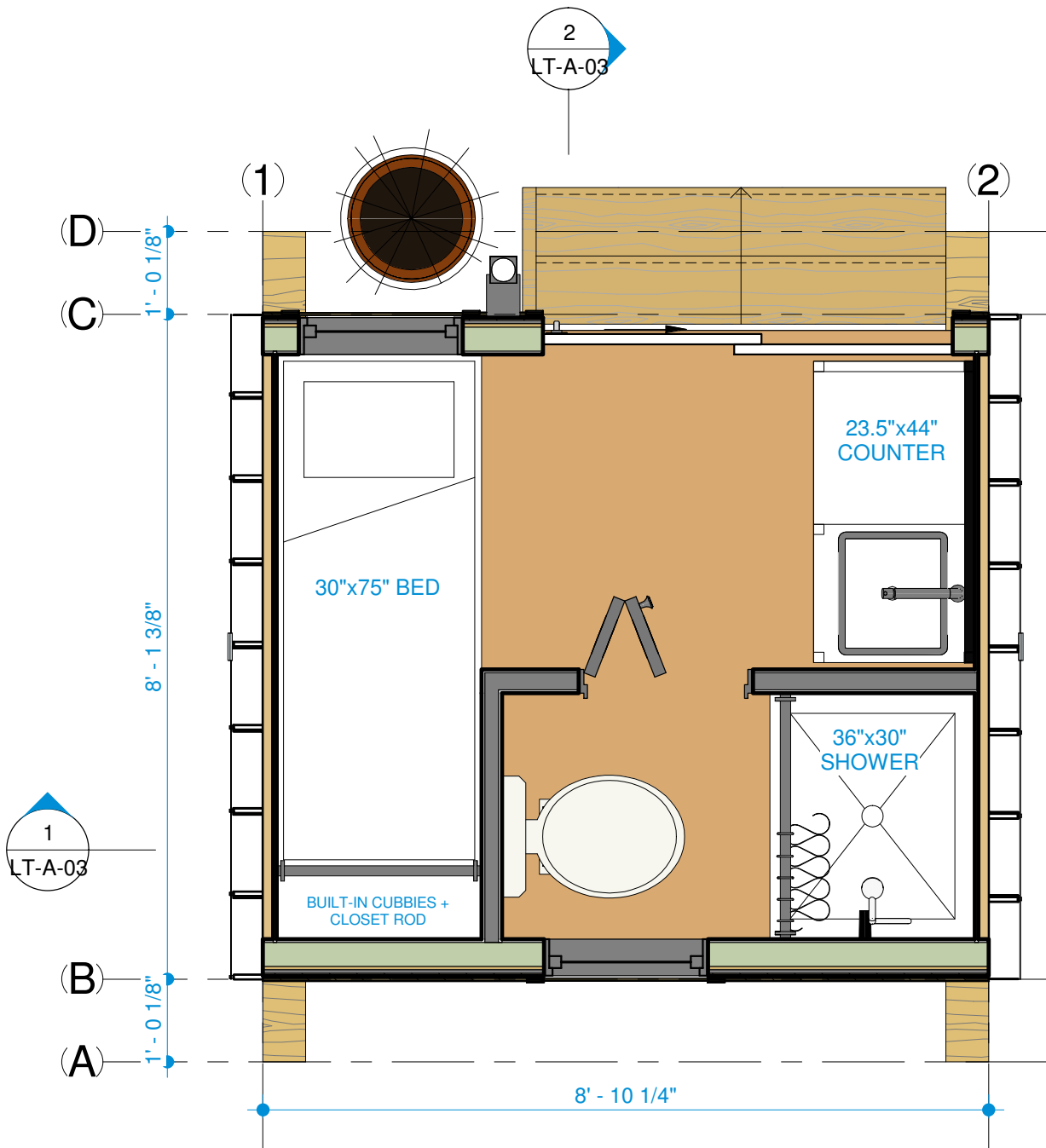
Date 2021-04-08 3:29:42 PM

Drawn by EJ

Checked by JA

LT-A-01

Scale



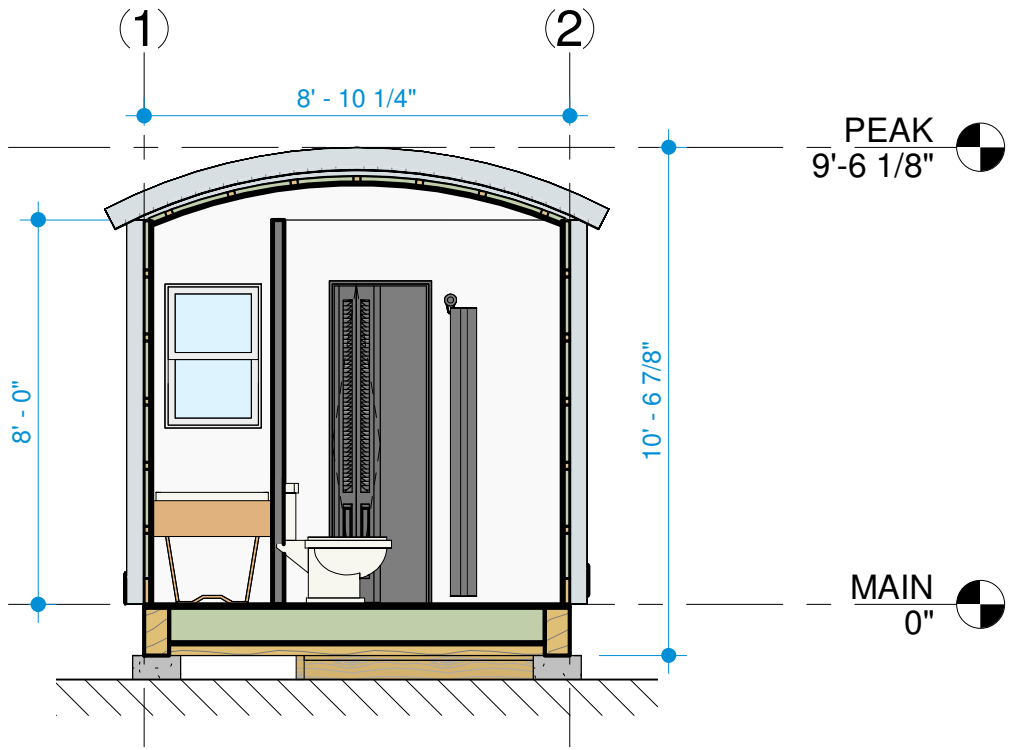
1 LT-DWELLY-PLAN (YOCTO HOME)
 1/2" = 1'-0"



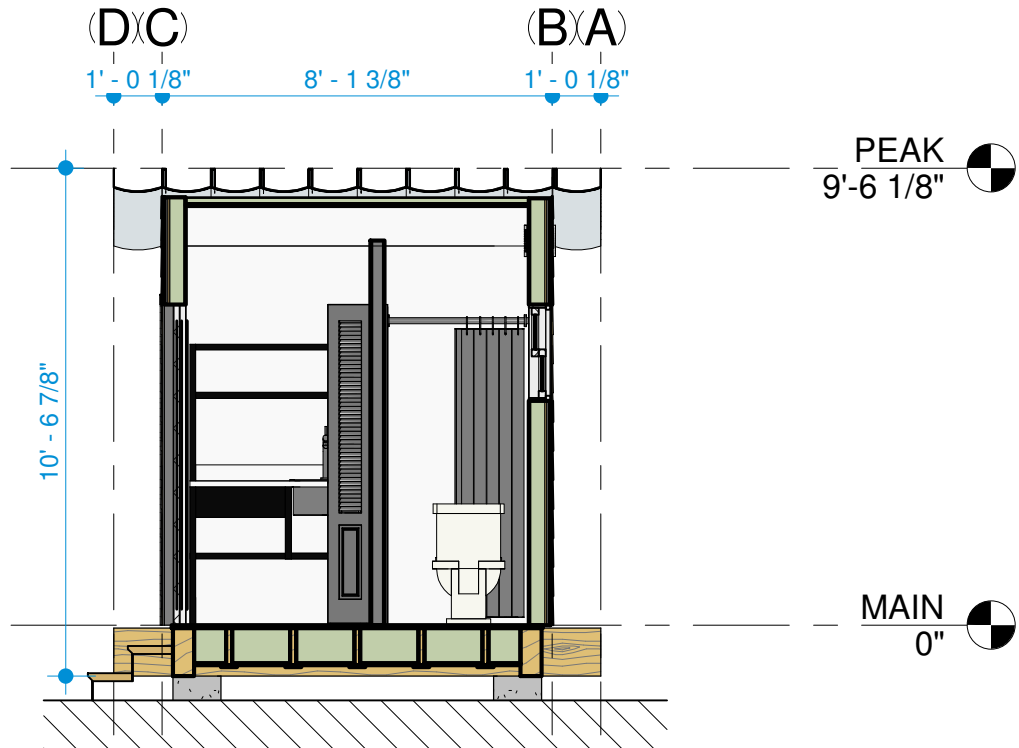
YOCTO Homes
 13020 Katonien Street,
 Maple Ridge, B.C, V2W 0J2

FLOOR PLAN
 Date 2021-04-08 3:29:43 PM
 Drawn by EJ
 Checked by JA

LT-A-02
 Scale 1/2" = 1'-0"



① SECTION 1
1/4" = 1'-0"



② SECTION 2
1/4" = 1'-0"



YOCTO Homes

13020 Katonien Street,
Maple Ridge, B.C, V2W 0J2

SECTIONS

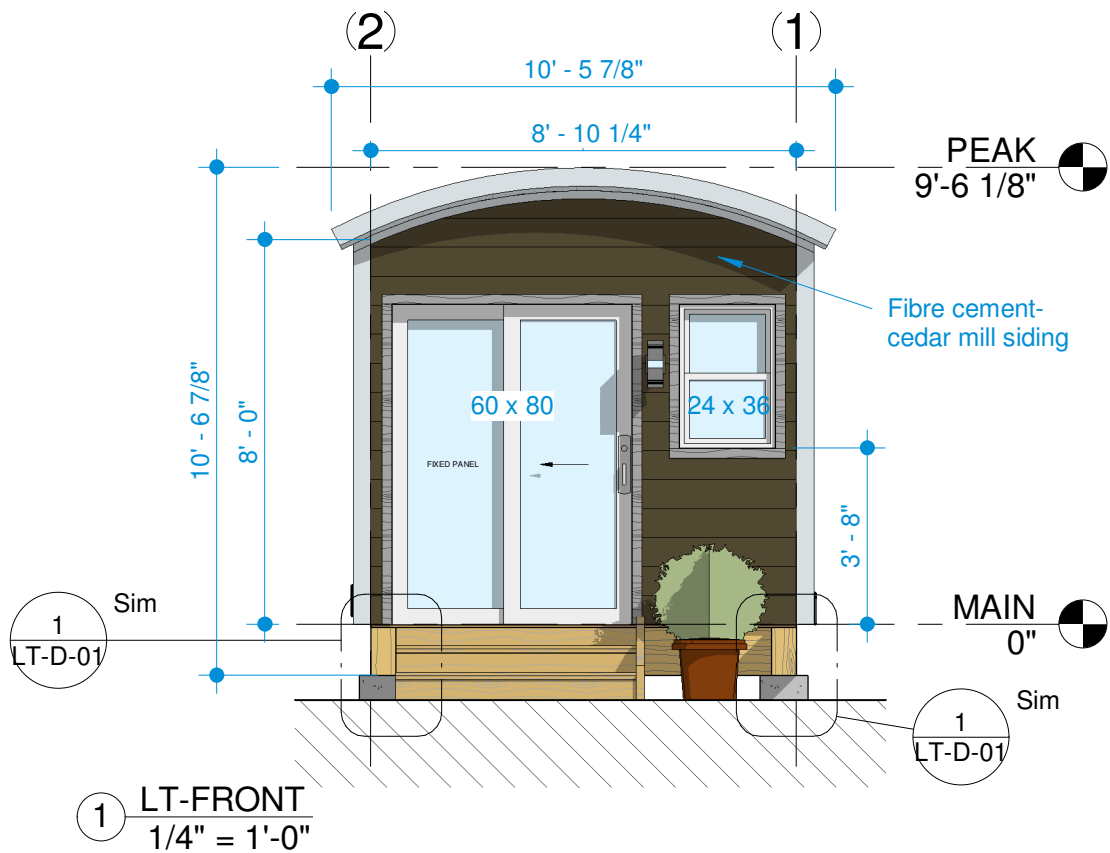
Date 2021-04-08 3:29:44 PM

Drawn by EJ

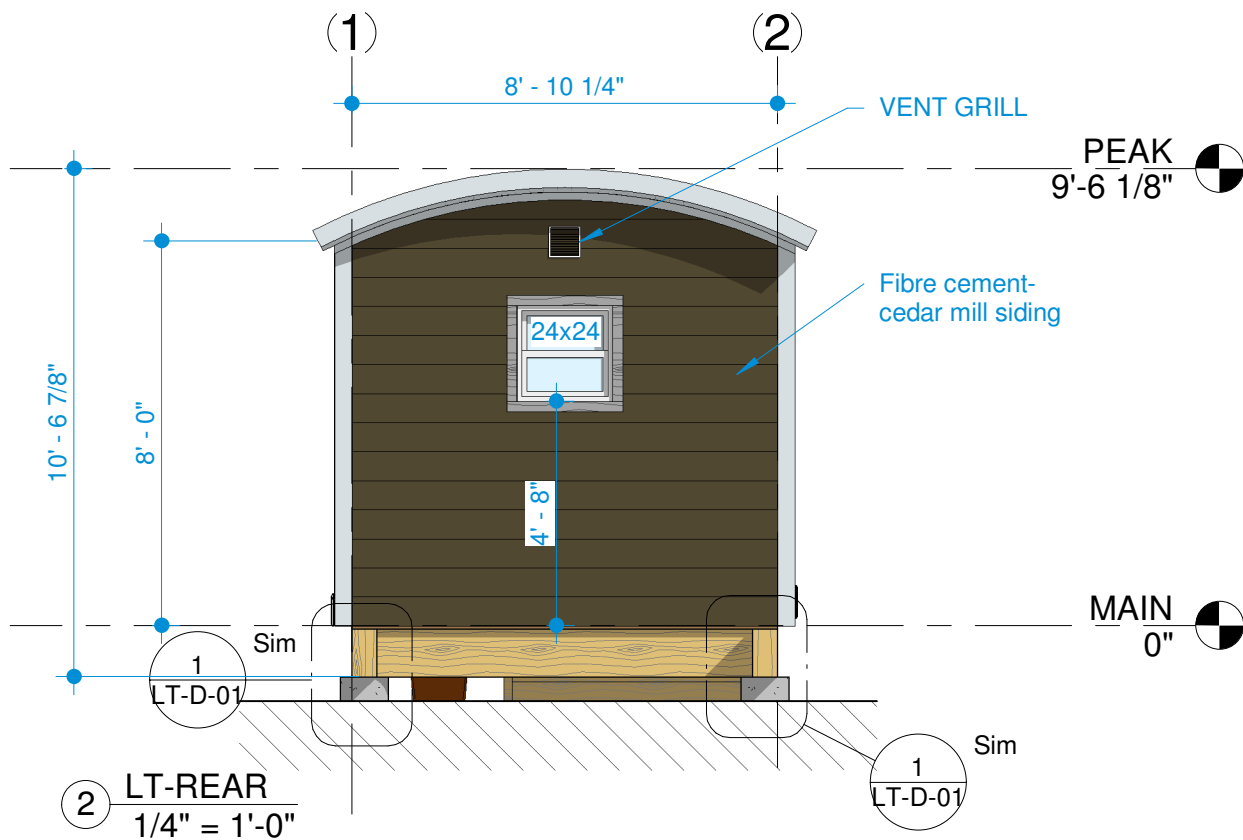
Checked by JA

LT-A-03

Scale 1/4" = 1'-0"



1 LT-FRONT
1/4" = 1'-0"



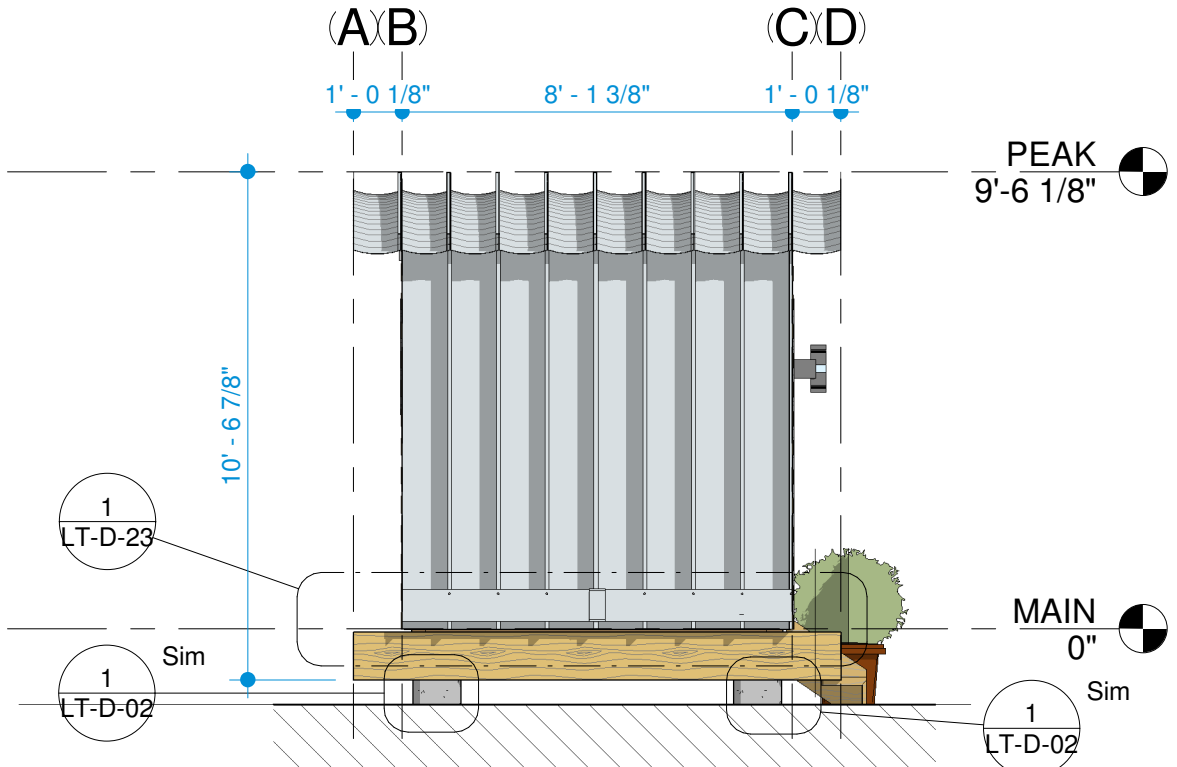
2 LT-REAR
1/4" = 1'-0"



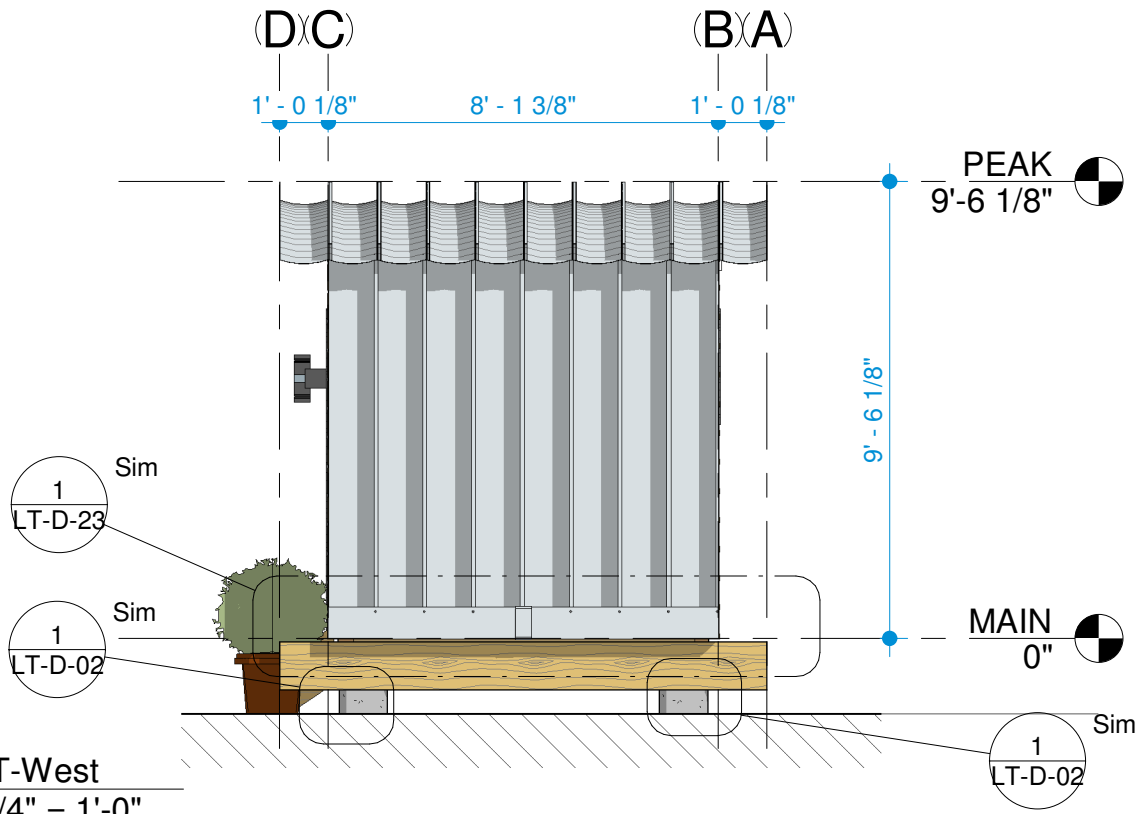
YOCTO Homes
13020 Katonien Street,
Maple Ridge, B.C, V2W 0J2

ELEVATIONS-1
Date 2021-04-08 3:29:45 PM
Drawn by EJ
Checked by JA

LT-A-04
Scale 1/4" = 1'-0"



1 LT-East
1/4" = 1'-0"



2 LT-West
1/4" = 1'-0"



| | | | |
|---|--------------|-----------------------|---------|
| YOCTO Homes | ELEVATIONS-2 | | LT-A-05 |
| | Date | 2021-04-08 3:29:46 PM | |
| 13020 Katonien Street, Maple Ridge, B.C, V2W 0J2 | Drawn by | EJ | |
| | Checked by | JA | |